

Giving Innovation to the world,

# THE LEADING JAPAN FOUNDRIES

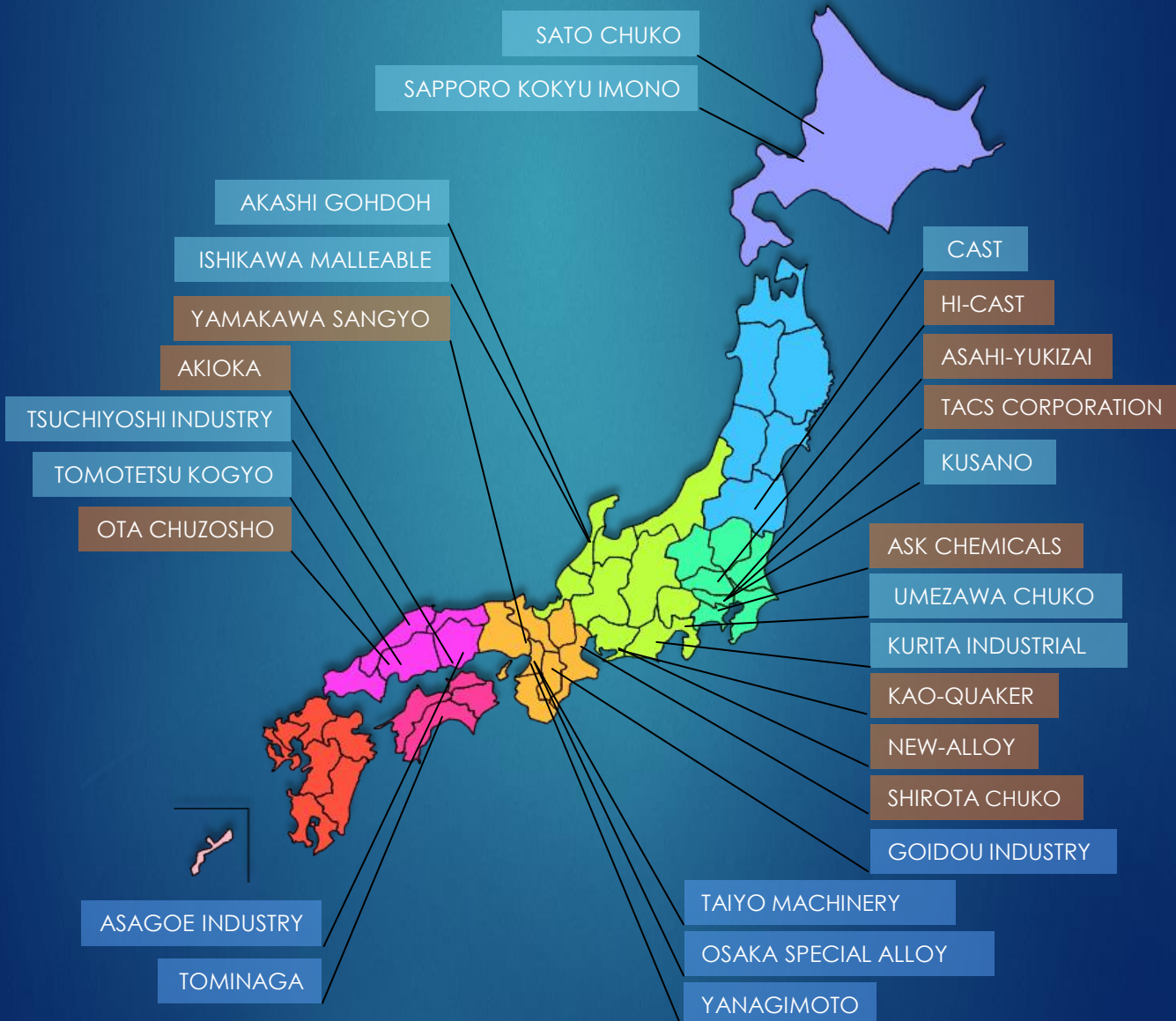
[www.japan-foundries.com](http://www.japan-foundries.com)



[www.japan-foundries.com](http://www.japan-foundries.com)

[www.japan-foundries.com](http://www.japan-foundries.com)

[info@japan-foundries.com](mailto:info@japan-foundries.com)



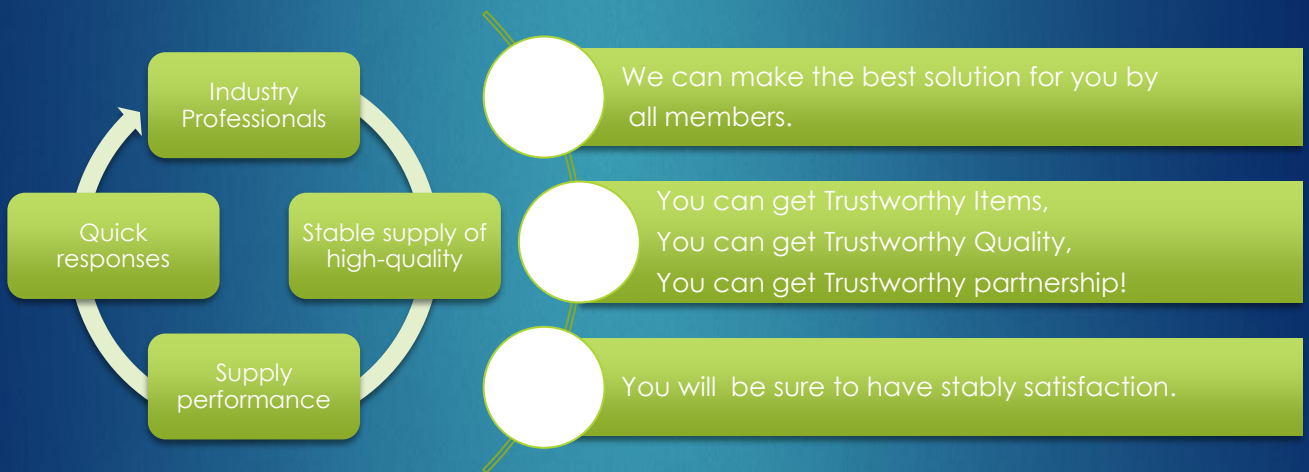
# What is THE LEADING JAPAN FOUNDRIES

Japanese foundries have excellent casting technology and produce high-quality castings in the world. Especially "THE LEADING JAPAN FOUNDRIES" is composed of 33 companies that possess advanced technologies and is a cutting-edge group to expand the sales network aggressively aiming at the global market.

We can supply various kinds of castings of iron, aluminum alloy (including composite) and copper alloy from 0.1 kg to 15 ton, and respond from mass production to low-volume production.

We are comprised of professionals of the top-level in the casting industry and able to supply stably high-quality castings. And we give all customers quick and efficient responses on estimates, orders and any other correspondence. We are well-experienced in the international business with global manufacturers.

Giving Innovations to the world. The Leading Japan Foundries.



We can supply various kinds of materials.



We can supply foundry parts of various industries.



## Classification by industries of The Leading JAPAN foundries

Classification by industries of The Leading JAPAN foundries		Automobile	General Industrial Machinery	Construction machines	Robot	Ship	Utility infrastructure	Others	Raw Materials and Additive	Trading and Others	Equipment etc.	Agricultural Machinery
Automobile	Ishikawa Malleable CO.,LTD.	⊙	○									
	SATO CHUKO CO.,LTD.	⊙	○	○	○							○
General Industrial Machinery	OTA CHUZOSHO CO.,LTD.		⊙			○		○				
	SAPPORO KOKYU IMONO CO.,LTD	○	⊙				○	○				
	YANAGIMOTO CO.,LTD.		⊙	○				○				
	TOMINAGA CO.,LTD.		⊙	○								
	KURITA INDUSTRIAL CO.,LTD.		○	○		⊙		○				
	TAIYO MACHINERY CO.,LTD.		⊙									
	UMEZAWA CHUKO Co.,Ltd.		⊙	○	○			○				
	AKASHI GOHDOH INC.		○	⊙		○	○					
Construction machines	AKIOKA CO.,LTD.		○	⊙	○	○	○	○				
	ASAGOE INDUSTRY CO.,LTD.		○	⊙	○							
Robot	CAST CO.,LTD.		○	○	⊙	○						
Ship	GOIDOU INDUSTRY CO., LTD		○	○	○	⊙		○				
Utility infrastructure	TOMOTETSU KOGYO CO.,LTD.	○	○				⊙	○				
Others	HI-CAST CO.,LTD.		○	○	○	○	○	⊙				
	SHIROTA CHUKO CO.,LTD.		○	○	○	○		⊙				
	TACS CORPORATION							⊙				
Raw Materials and Additive	Tsuchiyoishi Industry Co.,Ltd.								⊙		○	
	ASK CHEMICLAS								⊙			
	KAO-QUAKER								⊙			
	ASAHI-YUKIZAI							○	⊙			
	New-Alloy Co., Ltd.								⊙			
	YAMAKAWA SANGYO CO., LTD.								⊙			
Trading and Others	OSAKA SPECIAL ALLOY CO.,LTD.									⊙		
	KUSANO CO.,LTD.									⊙		



Innovation has always been central to Akashi's corporate philosophy, from the development of bimetal parts for the hydraulic and construction equipment industries in the '70s, to the recent discovery of Pearlite Bronze, a remarkable lead-free bronze that has come to the rescue of numerous industries struggling to find a lead-free solution with the necessary sliding properties.

**Bronze Castings**



Akashi Gohdoh bronze castings are used in a variety of applications due to their resistance to corrosion and wear, as well as their high electrical conductivity. We are well known in our field for our ability to cast problematic shapes with complicated core arrays.

**Bimetal Parts for Hydraulic Pumps & Motors**



AG Bimetal is produced by casting molten bronze onto ferrous metals. When this is performed on a high-strength material such as steel, a high-performance bearing capability is added, making it a perfect composite material for certain applications. Now available with our lead-free Pearlite Bronze!



Company	Akashi Gohdoh Inc.
Address	1484 Yokoemachi Hakusan, Ishikawa ,Japan
URL	www.akashigo.com
Email	richard@akashigo.com



**ASAGOE INDUSTRY CO., LTD.**



**ASAGOE INDUSTRY CO., LTD.**



ASAGOE is Japanese **casting and machining manufacture** since 1964.

Products made by casting and precision machining are used in Hydraulic components for Japanese power shovels, excavators, wheel loaders, and cranes.

Our products are used as **genuine parts** by lots of construction machinery manufacturers around the world due to high quality, high reliability, and high control production management.

**Our foundries and machining plants**



1. Headquarters
2. 1<sup>st</sup> Machining plant
3. MITSU foundry
4. 2<sup>nd</sup> Machining plant(MITSU)
5. 3<sup>rd</sup> Machining plant

All of them have acquired ISO 9001 and 14001 certification. Casting capacity of our foundries and our partner companies is about **4000tons per month**.

Company	ASAGOE INDUSTRY CO.,LTD
Address	120-28 Mitsutakadu, Kitaku, Okayama-city, Okayama, Japan
URL	www.asagoe-net.co.jp/en
Email	access@asagoe-net.co.jp



**Hydraulic component for Construction machinery, Agricultural machinery, and etc..**

- These are materials of Control valves, Pump cases, Motor cases, Cylinders, etc.  
 - These are used as hydraulic component parts for excavator, crane, and etc. This kind of product has a lot of holes with complicated for passing oil with high pressure. In these market, You can get high quality things, reduce your cost in total manufacturing, and save time. We already have a big market share in the world.





Since 1953, we at Ishikawa Malleable have been practicing sand casting in which molten metal is poured into sand molds that we manufactured. Repeating such process has helped us develop new casting supplies with a great outlook for the future. The products equipped with our technology are utilized in many fields that play a big part in our lives, including automobiles, lifeline, rail vehicles and medical devices. By constructing an integrated production system in which we manage everything from mold design to casting and mechanical processing, we demonstrate comprehensive strength to offer products manufactured under strict quality control. We take pride in our expertise and offering.



Company	Ishikawa malleable Co.,LTD.
Address	9 I,Uke, kahoku-Shi, Ihsikawa, 929-1121 Japan
URL	www.ishikawakatan.co.jp
Email	info@ishikawakatan.co.jp

**We mainly produce automotive parts.**



**UMEZAWA CHUKO Co.,Ltd.**



Our company has a history of 75 years. As a feature, it is possible to incorporate castings of 10 kg to 2,000 kg into various small lot products. It also supports both a form model and a wooden model. In 2014, we founded foundries in Thailand. Our company can support customers in the network of Japan and Thailand.



**Industrial machine parts**  
We mainly manufacture papermaking machine parts and machine parts of many kinds.



**Steelmaking plant parts**  
Maintenance parts of the plant factory are manufactured in short delivery time by casting from a foam model.



**Press mold parts**  
Press dies for automobiles and motorcycles are available from casting to machining.



**Thai factory**  
The Thailand factory produces large castings. Major products are mold parts, machine tool parts,



Japan Factory



Thai Factory

Company	UMEZAWA CHUKO Co.,Ltd.
Address	2608-48 Nakazato Fuji-dity Shizuoka 417-0826 Japan
URL	www.umecyu.co.jp
Email	info@umecyu.co.jp





# OSAKA SPECIAL ALLOY CO.,LTD.

info@otg.co.jp

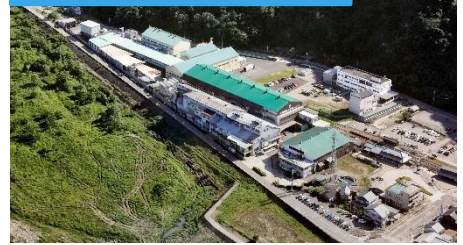
www.otg.co.jp/e-index.html

Nodularizers  
Inoculants other alloys



Cored Wire

Main Factory in FUKUI



As a specialized manufacturer of additives for casting iron melt treatment, we have accumulated data on molten metal treatment technology under various conditions from various casting factories in Japan.

Based on this vast amount of data, we have developed melt processing additives tailored to the various needs of users and are currently in the top while maintaining the top share in Japan's casting industry.

Let's become a good partner of making the best casting under the backing up of the sales system that supports fine usage of high alloy manufactured in Japan.

We not only sell additives but also propose the optimum method and alloy composition for melt processing. Please feel free to contact us.

Company	OSAKA SPECIAL ALLOY CO.,LTD.
Address	Meiji Yasuda-Life Osaka Umeda Bldg 12F, 3-20,3-chome, Umeda, Kita-Ku Osaka Japan
URL	<a href="http://www.otg.co.jp/e-index.html">www.otg.co.jp/e-index.html</a>
Email	info@otg.co.jp



## CAST Co., Ltd.



# CAST CO., LTD.

info@kkcast.co.jp

www.kkcast.co.jp



We support Japan's manufacturing business through the manufacturing of Sokeizai (castings). With 134 years of history, our refined skills and newest IT allow us to consistently manufacture [50kg to 4,000kg] of castings. With our clean facilities and talented technical capabilities staff, we are creating a path towards a brighter future.



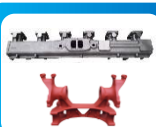
### Robotic Part Castings

Robotics are involved in various processes, from putting together cars to lifting, spot welding and more. We produce the casting that is used for robotic arms and bodies, as well as the bases. Many of the castings are hollow, but are generally not too thick. With thickness needing to vary, a lot of high-level techniques have been employed for production.



### Construction Machinery Castings

A vibratory compactor is a machine that compacts (rolls over) dirt, sand and asphalt. It is often used in narrow locations such as walkways and for plumbing. We produce the most important rolling part of this machine. This part requires smoothness when touching the surface despite the vibration, so toughness of the part is also required.



### Ship engine parts Castings / truck axle parts Castings

We mass-produce water cooled exhaust manifold of marine engine and casting of axle parts of truck. Both are very complex shapes and become important items, so advanced technology, quality, and stable quantity are required.



### Electronic parts machine Casting/ machine tool Casting

Surface mounters are equipped with electronic components such as ICs on printed circuit boards such as home appliances such as mobile phones and personal computers, and automobile industrial products. We mass-produce frame castings of such machine tool castings and machining centers such as machining centers. These cast products are complicated in form and require high precision castings.

### Shirakawa Factory



Company	CAST Co., Ltd.
Address	2 Sasakubo, Higashikaminodejima, Shirakawa-shi,Fukushima, 961-0302 Japan
URL	<a href="http://www.kkcast.co.jp">www.kkcast.co.jp</a>
Email	info@kkcast.co.jp

Robot	Construction Machines	General Industrial Machinery	Ship
GRAY IRON	DUCTILE IRON		



# KUSANO CO.,LTD.

info@kusano-s.co.jp  
www.kusanoco.com



Since our foundation in 1914, we have been promoting business with main focus on casting industry. Out of variety of products line, we keep the top share of foundry pig iron in Japanese market place. Now, our field is expanding worldwide. Our goal is to be a reliable specialized trading company focusing on iron and steel.

Company	KUSANO CO.,LTD.
Address	Kusano Bldg.,3-9-4 Ginza,Chuo-ku,Tokyo, Japan
URL	www.kusanoco.com
Email	info@kusano-s.co.jp



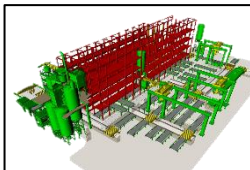
# KURITA INDUSTRIAL CO.,LTD.

info@kurita-kougyou.co.jp  
www.kurita-kougyou.co.jp



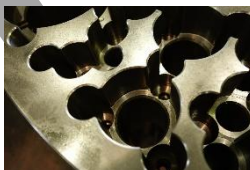
**Casting**

We have consistent system of molding. We are customer creed manufacturing company.

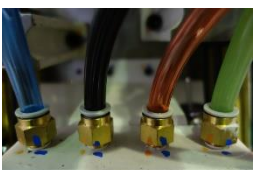


We have been expanding business starting from Foundry, then Machining and Assembling to get higher technology with flexibility. For instance, **casting > machining > assembly** or **casting > machining**, and **machining > assembles**. The production line is called "Free transforming line" which is constructed according to the user needs.

**Machining**



**Assembling**



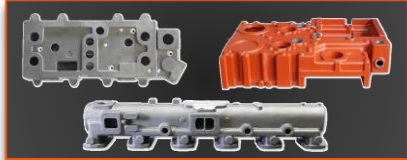
Production Profile	KURITA INDUSTRIAL CO.,LTD.			
Head office	2-2-1 Kuniyoshida, Suruga-ward, Shizuoka-city 422-8004 Japan			
Daito Factory	29-32 Kamihijikata Industrial Park,Kakegawa-city, 437-1432 Japan			
Material	FC250-300 FCD450-600			
Main flask size	3000*2000*700			
Casting weight	Min 150kg Max 8000kg			
Casting for	Industrial machine	Printing machine	Ship	Semiconductor

# GID GOIDOU INDUSTRY CO., LTD

info@goidou.co.jp  
<https://www.goidou.jp/>

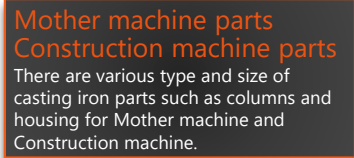
## Superior products produced with enough experience and high technology

More than 1300 years have already passed since we had started our business in Nara, ancient capital of Japan. We are trying to combine our long year experience and high technology to provide superior casting iron product.



### Engine Parts

Engine parts for marine vessels are used in severe environment and situation.

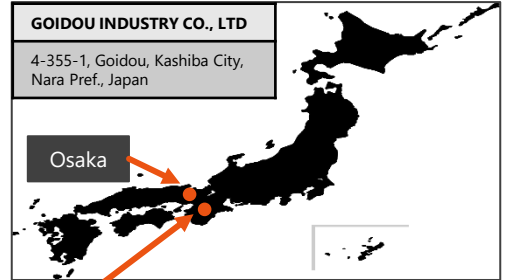


### Mother machine parts Construction machine parts

There are various type and size of casting iron parts such as columns and housing for Mother machine and Construction machine.



Grade	FC250 - FC300 , FCD450 - FCD600
Original Grade	Heat-Resistant Casting Iron
Weight	5kg - 1000kg
Minimum Order Quantity	3pcs
Maximum	200pcs/month



## Sapporo Kokyu Imono Co., Ltd.



### 札幌高級鑄物株式会社

SAPPORO KOKYU IMONO Co., Ltd.

info@sapporo-kokyu.co.jp  
[www.sapporo-kokyu.co.jp](http://www.sapporo-kokyu.co.jp)



We aim to be the leading special steel casting company in Japan, specializing in heat-resistant, corrosion-resistant, wear-resistant alloys. With 74 years of casting experience, we can provide high quality solutions to solver customer needs, from Hokkaido, Japan to the rest of the world.



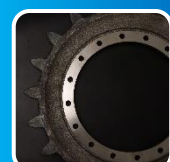
### Heat-resistant Alloys

- Our heat-resistant alloys can withstand high heat environments over 1000°C. We provide advice on the best alloy compositions for necessary hardness in high heat, and for corrosive, high heat environments such as chlorine and sulfur)
- Product examples:  
Incinerator parts, boiler parts petroleum refinery parts, industrial furnace parts, heat treatment parts



### Corrosion-resistant Alloys (Stainless Steel)

- Our corrosion-resistant alloys can withstand harsh corrosive environments, such as strong alkaline and strong acid environments. With years of experience in moulding, we can manufacture various three-dimensional products.
- Product examples:  
Pump parts, water treatment parts, casings, impellers, covers, sieves



### Wear-resistant Alloys

- Our wear-resistant alloys provide solutions to erosion and tribology issues. We can apply induction hardening and thermal spraying on wearing surfaces and manufacture hard products over HV800 and tough products.
- Product examples:  
Power plant parts, crusher parts, rollers, dust collector parts



Company	Sapporo Kokyu Imono. Co., Ltd.
Address	13-12-2-1 Hassamu, Nishi Ward Sapporo, Hokkaido, Japan
URL	<a href="http://www.sapporo-kokyu.co.jp">www.sapporo-kokyu.co.jp</a>
Email	info@sapporo-kokyu.co.jp







We are a casting manufacturer aiming to contribute to society by providing high-quality castings and to obtain social trust by helping to activate the local community.

Production materials : Plain cast iron and ductile cast iron

**Automotive Parts**



- Engine mount bracket
- Differential case
- Exhaust manifold
- Flywheel •Oil pan •Water pump
- Disc rotor •Timing gear
- Timing chain •Others

**Industrial machinery Parts & Agricultural machinery Parts**



- Elevator pulley •Joint
- Cover •Case
- Manifold •Shaft•Others



Third plant (casting)

Company	SATOCHUKO co.,ltd.
Address	356Moseushicho,Uryugun,Hokkaido, 079-0502 Japan
URL	<a href="http://www.satochuko.co.jp">www.satochuko.co.jp</a>
Email	info@satochuko.co.jp



**Taiyo Machinery Co.,Ltd.**



**太洋マシナリー株式会社**  
TAIYO MACHINERY CO.,LTD.

Since our career starting in 1927 as the first manufacturer of foundry equipment's and products in Japan, we have been doing our best to contribute to the development of the industry for more than 95 years. We owe the prosperity of this business to your support and really appreciate for it, we have been awarded as one of the leading companies in this field of industry in Japan as well as in the world. However we will never be satisfied with status quo and continue striving to widely contribute to the society.



Case Sample

Company	TAIYO MACHINERY Co., Ltd.
Address	4-1-7 TSURUMACHI , TAISHO-KU , OSAKA-SHI , OSAKA ,551-0023 Japan
URL	<a href="http://www.omco-taiyo.co.jp">www.omco-taiyo.co.jp</a>
Email	info@omco-taiyo.co.jp



Long-Arm(40T Mixer)



2PS(Reclamation)



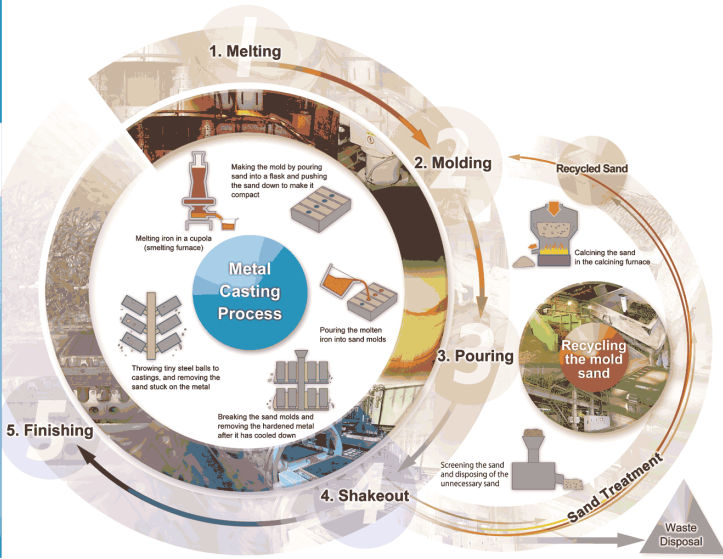
Paramount(100T Mixer)





We, Tsuchiyoshi Industry based in Japan are the trading company specialized foundry which are continually developing overseas markets. Business details are sales of silica sand, secondary materials, planning & installation of foundry machinery equipment, manufacturing shell cores, resin coated sand and consulting foundry engineering. On the other hand, we focus on environmental business like preventing noise pollutions, odious smells and others at foundry factories. We're still growing up with valued customers day by day to support and achieve their technology succession to the new generation which is available for us to take care of total supports of manufacturing, sales and engineering.

Products



- 1. Melting**
  - Refractory materials  
Standard: refractory brick (aluminosilicate, chamotte, Silicon Carbide, etc.), heat-resistant brick, graphite brick
  - Non-standard casting material, mortar, castable material, precast material, etc.
  - Foundry coke  
suspended coke, brown coke, etc.
- 2. Molding**
  - Foundry sand  
FC2 (medium-sized sand), dry silica sand (Yamato silica sand, Kawamura silica sand, imported sand), special sand (chrom sand, chrome sand, Cenabex® alumina sand, slag sand), etc.
  - Inorganic binders  
Bentonite, sodium silicate, Snowdur®, etc.
  - Organic binders  
Furan resin, alkaline phenolic resin, phenolic urethane, etc.
  - Compounding agents  
Coal powder, various types of casting starch, etc.
  - Castings  
For cast iron (alcohol-based, water-based), for cast steel (alcohol-based, water-based, for evaporative pattern casting, etc.)
  - Mold release agents  
For sand molds (oil-based, water-based), for die casting (oil-based, water-based), etc.
- 3. Pouring**
  - Molten metal additives  
Nickel-based primary powder, Silicon Carbide, molybdenum, selenizing agent, boronizing (B-1, B-2, B-3) and other boronizing, etc.
  - Slag removers
- 5. Finishing**
  - Abrasive materials  
Silicon carbide, aluminum oxide, etc.



Company	TSUCHIYOSHI INDUSTRY CO.,LTD.
Address	9-9 HIRODEN MITSUISUMITOMOKAIJYO BUILDING 8TH FLOOR, NISHITOKAICHIMACHI, NAKA-KU, HIROSHIMA-CITY 730-0806 JAPAN
URL	http://www.tyco.co.jp
Email	info@tyco.co.jp



Weight:100kg~1000kg  
Info@ftm-tominaga.co.jp

We respond to the needs people, technology, facilities. Technical group, TOMINAGA (since 1959)  
The product with the high quality and service are offered.  
(Casting) Maximum mold size 2000×2000×1000mm about. Up to 2500kg weight about.  
(technology) From casting to machining finished product supported through the high technology over half a century.



**Dredging Equipment casting**  
This is a turning drum. The material I has been produced in a special component of the FC250. Magnitude There outer diameter of about 1500mm.

**Gas turbine casting.**  
This will be the housing for gas turbine for power generation. Material is FCD450, but products that are produced by clearing the strict testing standards.

**Machine tool parts casting.**  
This will be the base casting of machine tools. Material is FC250. Performs a stress relief by heat treatment, we are finished with a rust paint.



Company	TOMINAGA Co.,Ltd.
Address	974-5 Nunoshida Kochi-city Kochi-pref. Japan
URL	www.ftm-tominaga.co.jp
Email	info@ftm-tominaga.co.jp





TOMOTETSU is a [form & sharp making] specialist manufacture.

We make cast-iron dies and molds for automobiles as well as frames for industrial machinery, surface plates,manhole covers for drains & sewers.

Monthly output of 1,000 tones above.

We pride ourselves on the Japanese spirit of [Manufacturing improvement through human resource development.

## Memorial Design Color Manhole



This is a design manhole was made in memory of friendly relationship with Chiba prefecture and Dusseldorf city since 2005. The lion is in the crest of Dusseldorf and CHI-BA+KUN is mascot character in Chiba prefecture are in the design of manhole. We will donate this manhole to Dusseldorf city after GIFA2023 closed.

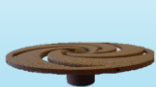
Company	TOMOTETSU Kogyo Co.,Ltd.
Address	6151-1 Imuro Asa-cho Asakita-ku Hiroshima-city Japan 731-1142
URL	www.tomotetu.co.jp/
Email	info@Tomotetsu.jp



YANAGIMOTO Co., Ltd. was established in 1954. Since our inception we have continually improved our techniques while searching for new and innovative methods for casting. We strive to create a sustainable future utilizing our traditional methods. Our mission is to produce reliable, high quality parts that help to further the success of those that use them and play our small part in creating a better world.

### This is what we offer:

- Using our unique gravity casting method we can provide high-strength impellers that rival precision investment casting.
- Our use of wooden molds allows for lower initial investment without sacrificing quality.
- We are capable of producing impellers with thin channels using high-strength cores, as thin as 200mm outer diameter with a 2.4mm channel.



Sand core



Single impeller for pump(SCS)  
Φ330mm Channel 9mm



Open impeller for pump(CAC)  
Φ700mm

We are committed to fully meeting our clients' expectations for quality and performance requirements. This has led us to work with 6 of the top 10 companies by revenue in the Japanese pump industry including Kubota Corporation, Ebara Corporation, and Torishima Pump MFG. Co., Ltd., among many others.



Company	YANAGIMOTO CO.,LTD.
Address	3-17 Takasago, Takaishi-shi, Osaka, 592-0001, Japan
URL	www.yanagimoto.jp
Email	info@yanagimoto.jp



# Japan Foundry Society



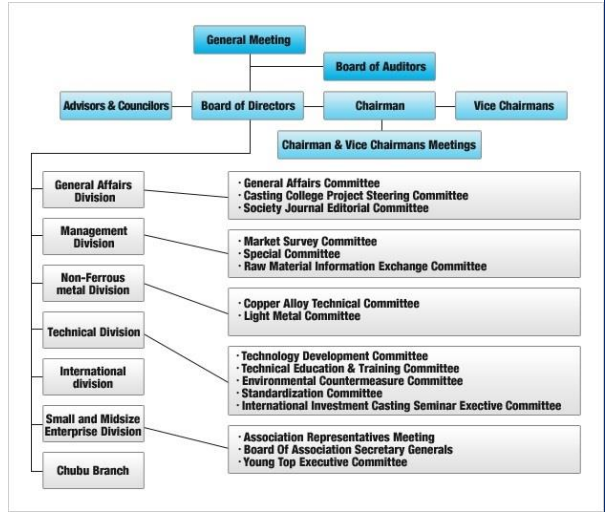
Association in July 2009, and was established as core of the casting industry in name and in reality, to enhance the quality of castings and promote the casting industry, thereby contributing to the development of the Japanese economy and upgrading the livelihood of its people.

To accomplish these objectives, the Society engages in studies and research, human resources development, the promotion of industrial safety and health, environmental conservation measures, training programs, the sponsoring of seminars and lecture and interchange and cooperation with casting-related organizations; both inside and outside Japan.

The casting industry has been regarded as a core industry that supports manufacturing in Japan. However, it is facing many problems, including international competition, that is intensifying year after year, as well as the surging prices of raw materials.

The Society has forged a casting industry vision and is tackling reform of the casting industry to ensure its evolution as an industry that continues to support manufacturing a decade on.

www.foundry.jp



Company	Japan Foundry Society
Address	Room 501, Kikai-Shinko-Kaikan, 3-5-8, Shiba-Koen, Minato-ku, Tokyo 105-0011, Japan
URL	www.foundry.jp
Email	info@foundry.jp

# New-Alloy Co., Ltd.



info@New-Alloy.com  
www.new-alloy.com

**Stop the Defects of Cast iron! It's Our mission! Total solution of Cast Iron!**

The general manufacture of additives for cast iron

Graphite nodulariser, all kinds of inoculants, ferro alloys for additives, defects analysis, elemental analysis, research and development(R&D)

## Factory



**High frequency induction furnace**  
The furnace for experiments or melting on contract. All kinds of analysis are available on the spot.



**Cored Wire Manufacturing System**  
A variety of additives are available to put inside of the wire up to customers choice.



## Products

- Cored Wire
- Nodularisers.Inoculants
- All kinds of New-CR series Mg alloy
- Other additives for all kinds of cast iron
- Carbon Additives
- Crystal Graphite



The factory and research and development center of head office

## Laboratory



FE-SEM+EDS+WDS

**Technical supports**  
Please do not hesitate to ask anything about raw materials and additives for your cast iron or examination of them.



ICP-OES

Carbon/sulfur analyzer

Oxygen/Nitrogen/Hydrogen analyzer

Company	New-Alloy Co., Ltd.
Address	1,Shinnishihama-Cho,Toyohashi-City,Aichi-Pref.441-0153 Japan
URL	www.new-alloy.com
Email	info@New-Alloy.com



# ASAHI YUKIZAI CORPORATION



Asahi Yukizai Corporation, formerly known as Asahi Organic Chemicals Industry Co. Ltd of Japan, and Modi Rubber Limited of India collaborated to form Asahi Modi Materials Private Limited (AMMPL) in November 2012. The company is involved in the manufacturing of resin-coated sand/shell sand using high quality washed silica sand, artificial sand or cera-beads and solid phenolic resins for automotive and non-automotive original equipment manufacturers in the Indian and overseas market.



Asahi Yukizai Corporation has its headquarters in Nobeoka (Miyazaki Pref.) & Tokyo. With a capital of US\$ 65 million and a sales volume of US\$ 430 million, it is the market leader in Japan with a market share of 35% in the business of resin-coated sand. Asahi Yukizai Corporation has been the preferred supplier for

foundry material. Asahi Yukizai has three manufacturing facilities in Japan, which are located in Aichi, Tochigi and Hiroshima. The Tochigi and Hiroshima factories manufacture resin-coated sand (7000 MT/month). Asahi Yukizai also has a 100% subsidiary in Nantong, China, which manufactures resin (1000 Mt/month) and has a technical collaboration with PIM, Thailand.

## Resin Business Network - Plant capacity (MT/Year)

Product	Aichi Factory	Tochigi Factory	Hiroshima Factory	China
Solid Resin	7,200	-	-	12,000
Liquid Resin	12,000	-	-	-
RCS	72,000	72,000	72,000	-
Reclaimed Sand	42,000	42,000	42,000	-

## Global Network



1. Japan
2. China
3. India
4. Thailand
5. Mexico

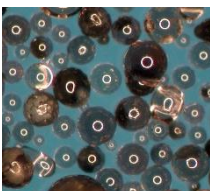
# Yamakawa Sangyo Co.,Ltd.

Founded in 1933, Yamakawa have continued to offer wide range of industrial sand and related products to customers in Japan and Asian countries while operating in an environmentally responsible manner.

## This is what we offer:



**NESAND** is special artificial sand developed by Japanese leading foundry sand supplier Yamakawa Sangyo, Amagasaki, Japan, and is used with silica sand to improve quality and reduce costs. Leading manufacturers see it as an investment in their process quality. This unique product was specially designed and developed for foundry professionals facing casting defects such as veining and deformation, which are usually caused by thermal expansion of silica sand.



**ESPEARL** is the newest, state-of-the-art artificial recyclable casting sand developed by Yamakawa Sangyo, Co., Ltd. Through long years of focused research and development testing. **ESPEARL** is ball-shaped artificial sand made of alumina, and can be repeatedly reused since it has better hardness and durability compared to silica sand. For this reason, ESPEARL achieves benefits not only for the foundry industry, but also contributes to the preservation of natural sand resources in rapidly growing countries. Since **ESPEARL** has higher thermal conductivity and excellent chilling characteristics than other products, it can be used as a substitute for Zircon and Chromite.



Address	3-27, 1 chome, Nishinagasu-cho, Amagasaki, Hyogo, 660-0805, Japan
URL	<a href="https://www.yks-net.co.jp/">https://www.yks-net.co.jp/</a> 
Email	<a href="mailto:gifa2023@yks-net.co.jp">gifa2023@yks-net.co.jp</a>  valid until September 30, 2023

OTA CHUZOSHO CO., LTD.



Thanks to you, 100<sup>th</sup> anniversary!!

We manufacture parts for ①Printing machine ②ship ③coke oven ④molding machine ⑤machine tool by hand molding.  
Especially, we can make a long parts as 8m(26feet). Rather than casting only, machining, assembly and we have sheet metal factory as subsidiary company. It allows you to produce a combination product of castings and sheet metal products.  
From now, we try to make an added value and creation more and support your life in the world.



**OTA CHUZOSHO CO., LTD.**  
Hiroshima, JAPAN

<https://www.ohtachuzousyo.co.jp/>

HI-CAST CO.,LTD.



ART OBJECT OVEN  
『PIZZA EGG』

<https://maruimono.net>

<https://www.hicast.jp>

AKIOKA Co.,Ltd.



**AKIOKA.Co.,Ltd.**



Our company has been doing specialized casting since 1966. Although our central focus has been construction machinery, we are able to produce hydraulic equipment, industrial equipment, robotic apparatus, parts for ships and valves as well.

We offer a wide range of metallic casting, available in various size specifications and lots to accommodate our customers' specific needs and unique applications.

We are proud to provide a diverse range of casting methods, as well as machining and finished product assembly. We service all regions, domestic and abroad, focused primarily in Asia.

Address	8252-35 Otoshima Tamashima Kurashiki city Okayama Pref 713-8103 Japan
URL	<a href="http://akioka1966.co.jp">akioka1966.co.jp</a>
Email	(Please contact us from our website.)
Associated company	AKIOKA TRADING(DALIAN) CO.,LTD
URL	<a href="http://akioka-trading.com">akioka-trading.com</a>

TACS Co., Ltd.



**TACS CORPORATION**

Who we are, What we do.

TACS Co., Ltd was founded in 1947, and we've been manufacturing a wide range of cutting / grinding wheels made with resin-bonded materials.

We aim at the products that are environment-friendly, improving durability and reducing dust in cutting and grinding.

Location

Headquartered in Tokyo. Factory is located in Shiga prefecture nearby the biggest lake in Japan called Biwako. 3 sales locations; Osaka, Takasaki and Ibaragi.



Our flagship product

Product lineup

- Small/Middle/Large size cutting wheels
- Resin-bonded grinding wheels
- Vitrified grinding wheels
- Offset grinding wheels
- Abrasive paper
- Polishing paper
- Internal and Mounted wheels
- Diamond grinding wheels



Sales branch in Shiga



Our factory

CONTACT INFO

Contact Person

Yasu Nishimura

Address

47-5 Shimizu-Cho, Itabashi-ku, Tokyo 174-0053 JAPAN

E-mail

[ynishimura@tacs-resinoid.jp](mailto:ynishimura@tacs-resinoid.jp)



## SHIROTA CHUKO Co.,Ltd.

**Saving the future of medicine  
with castings**



electrical castings  
medical equipment  
railroad cars  
wind power generators  
low-temperature mechanics  
speed reduction



# SHIROTA CASTING

[www.shirota-chuko.co.jp](http://www.shirota-chuko.co.jp)

Through Japan's patented high quality metal casting technology, our company works to contribute to the customer satisfaction and prosperity all over the world!

<b>Company</b>	<b>SHIROTA CHUKO Co.,Ltd.</b>
Address	1513hagasaki Kuwana, Mie 511-0944 Japan
Email	info@shirota-chuko.co.jp

## Kao-Quaker Co.,Ltd.

**Challenge the New!  
Your Solution Partner**

**Answer the world's needs with technology and quality**

Kao Huludao Casting Materials Co.,Ltd.  
Kao-quaker (Japan)  
Kao Chemical Corporation Shanghai  
Kao Industrial (Thailand) Co., Ltd.



**Kao-Quaker Co.,Ltd.**

<https://chemical.kao.com/kaquaker/en/>



**KAO**

[Head Office] 2-1-3 Bunka, Sumida-ku, Tokyo  
Tel:+81-3-5630-7841

[Domestic sales offices] Tokyo, Nagoya, Osaka  
[Overseas bases] Thailand, china



Furan & Alkaline-Ph Binder, Coating



EG RUNNER



Analysis



Kao monitoring system

## ASK Chemicals

ASKCHEMICALS 

**Leveraging  
your success.**

Energy and resource efficiency, sustainable transformation, additive manufacturing, lightweight construction, and e-mobility – these are the hot topics in our industry. Stay one step ahead and tackle them together with your reliable partner, ASK Chemicals. Our experts are at your side to find solutions that ensure your success.

MEET US AT GIFA 23! Hall 12, Booth A22



Erdal Celik Key  
Account Manager



**BE AHEAD.  
ASK EXPERTS**

Exhibit at NEWCAST

## THE LEADING JAPAN FOUNDRIES

Exhibit at NEWCAST/GIFA 12-16 June 2023, Düsseldorf, Germany.

[www.newcast.com](http://www.newcast.com)



**THE LEADING JAPAN FOUNDRIES** will be represented at NEWCAST in 2023 with 16 companies from the area of metal casting related technologies. You are welcome to meet us at our booth.

Please visit booth of **THE LEADING JAPAN FOUNDRIES**, Hall 14 F04 of NEWCAST.



We are in **NEWCAST**  
Booth number :

**HALL 14 F04**

